

Collective Release 12 on general release

Collective Release 12 is now available for deployment to new and existing customers. It includes a number of exciting new features plus general enhancements and bug fixes.

Disposal Site Management

Where there are several disposal facilities for a waste stream – for example different landfill sites, it is likely that there are cost and efficiency benefits in directing crews to the right one. You can schedule each crew to the best disposal facility for their route each day, even sending them to different ones for their first, second and third tips.

The in-cab system will advise and navigate them to the disposal facility with an override option with a reason code should they need to deviate. The Collective desktop immediately alerts you if a crew attempt to use the wrong facility.




Stock photo ID:19717961

Weighbridge Ticket integration

Collective can now receive disposal tickets direct from your MRF, landfill or other disposal site in real-time. Tickets are transmitted securely from the disposal site and validated against your fleet list and operational data without any manual administration or data entry.

Each ticket is matched back to the appropriate workpack giving you fast and accurate data about tonnages on each round. Highlight reports show unusual tip activity, spare capacity and cost data.

Disposal	
Site:	[14:37] EAST LEEDS TLS - East ...
Ticket:	22345
Net Weight:	6302 KG
 Weigh On	
 Weigh Off	
	 

Paste this onto IC100 in-cab photograph

Vehicle Status API

Your disposal facilities can now access live information about the status of your fleet, including all vehicles operating that day, driver name, waste type and workpack. You can be confident that off-hire vehicles or vehicles out of service are unable to present to your sites or be billed to your account.



Photo id 9196270

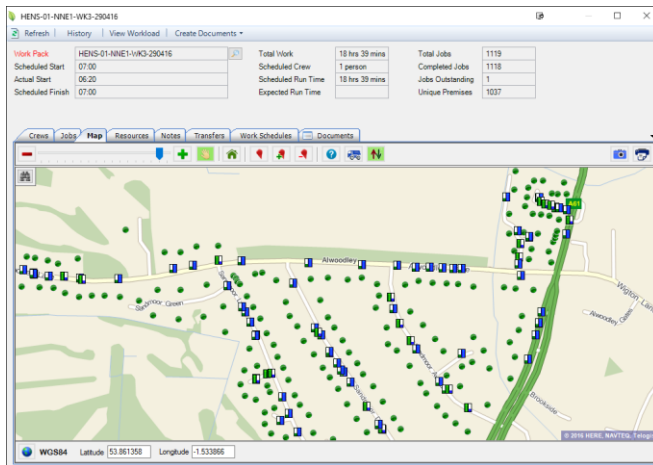
This information is both human and machine-readable to allow integration with manual and ANPR-based gate systems.

Enhanced API calls

Release 12 brings a number of new API calls which allow third party systems to interact with Collective. These include enhanced ability to query vehicle and inspection information.

Bin lift plotting

Real-time vehicle data is now enhanced with map views of lifter activity. Monitoring productivity, resolving customer enquiries and identifying 'grey lifts' is now easier than ever as you can see exactly where each bin lift was made.



Enhanced reporting shows lift rates for each crew throughout the day. It's now easier than ever to see where crews are most productive, monitor capacity and ensure they are taking their breaks. If you use a route optimization system, then this rich performance data will also improve the accuracy of your models.

Enhanced scheduling rules

Collective has always had a powerful and flexible scheduling system and Release 12 adds new sophistication when learning the schedule from nearby premises. When you deliver a bin to a premises

Collective can apply different rules depending on whether the bin is replacing an existing one, is additional or is the first one ever at the premises. The result is fewer manual interventions and better scheduling information for you, your call centre and your customers.

Improved Webview

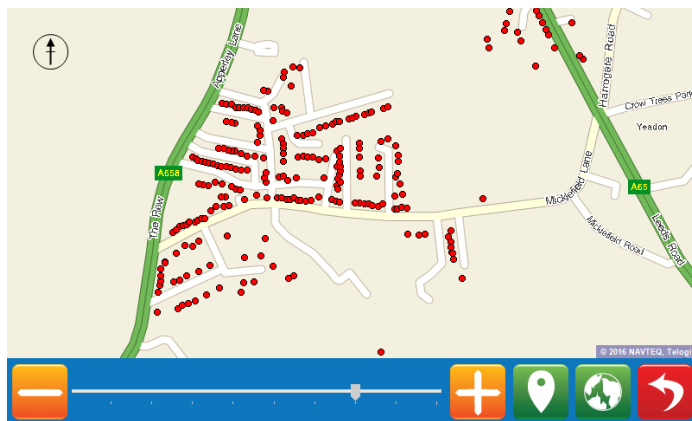
In Release 12 we have improved the look and feel of the WebView system, making it faster, more readable and more responsive.

We've also added a new Calendar view. This makes it incredibly easy to see what is happening at the customer's premises on any given day, including Bank Holiday arrangements, bulkies and bin deliveries.

In-cab mapping improved with Local View

We've improved the in-cab mapping and navigation so that terminals no longer have to be configured with the gross weight and dimensions and take that data from the central database. Now if you move a terminal from an RCV into a Transit van it will automatically reconfigure the navigation settings to take you on the best route.

The local mapping option shows you a large scale view of nearby streets and shows you any remaining jobs. Drivers can quickly see exactly where they've been and what's left to do, a really useful feature on large estates and particularly when they've had to deviate from their normal route.



Paste this onto IC100 in-cab photograph

IC100 undo

Everyone makes mistakes and drivers can now undo events they record in error. You might think a bin is not out and then turn a corner to find it nearby – now it's no problem to correct it and move on.

Loader logons

Release 12 improves safety and compliance by allowing drivers to register their loaders directly through the in-cab terminal. Back-office staff can now quickly see who was working on which vehicle at any given time and be aware of crews who are short-handed or lone-working.

The driver can log loaders in or out at any time, allowing staff to be picked up on route, transferred between crews or reported as off-sick if they do not arrive or leave early.

Driver: Adam Fox
Workpack: HENS-01-F01-WK3-290416

Burrill, Colin

Here

Smith, Barrie

Not Here



Paste this onto IC100 in-cab photograph